

Verputzmaschine variable Winkel
Corner Cleaner for Varying Angles

APH-LV



CNC-Verputzmaschine mit höchster Bearbeitungsgeschwindigkeit und Präzision durch modernste Lineartechnologie, für Sonderbauelemente im Winkel von 30°-160°

- Solomaschine
- Modernste Steuerungstechnologie auf Windows-Basis
- Patentiertes Picture-Programming (visuelles Programmieren ohne CNC-Kenntnisse)
- Oben: 4 Werkzeugträger mit max. 11 Werkzeugplätzen
- Unten: 4 Werkzeugträger mit max. 11 Werkzeugplätzen

Optional:








- Automatisches Lackieren der Schattennut
- 2. Sichtflächenmesser
- Inneneck-/Sichtflächenfräseinheit
- Profilerkennung
- CNC-Stulpaggregat für Rahmen- oder Flügelprofile
- Flügellagerbohraggregat

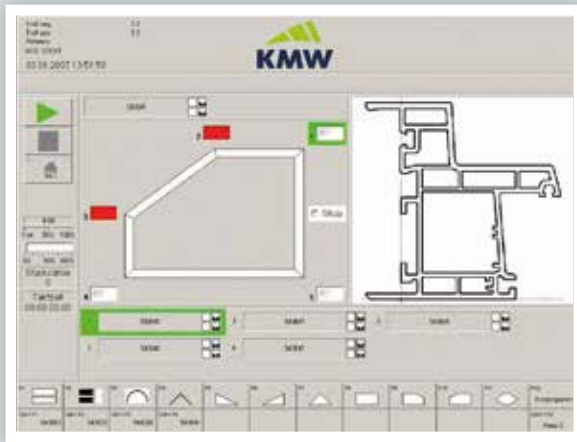
High-speed and high-precision CNC corner cleaning machine using the latest linear technology, for special design elements with angles of 30° - 160°

- stand-alone machine
- latest Windows based control technology
- patented Picture Programming software (visual programming without CNC knowledge)
- top: 4 tool carriers with max. 11 tool slots
- bottom: 4 tool carriers with max. 11 tool slots

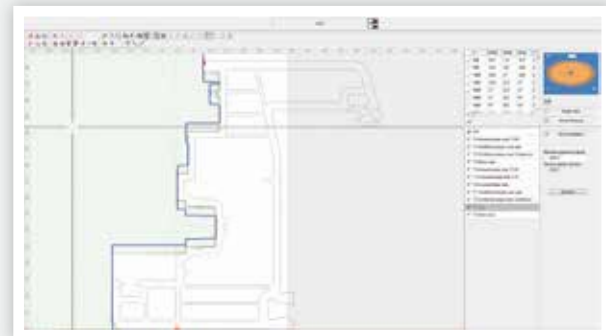
Options:

- automatic shadow groove painting
- 2nd visible surface blade
- Milling unit for inside corners/ visible surfaces
- Profile identification
- CNC sleeve unit for frame or sash profiles
- Drilling unit for sash hinges

							
APH-LV	230/400 V 50 Hz 6 kW	25 NL/min 6 bar	320 x 320 mm	PB max: 130 mm PH max: 118 mm	11	11	2500 x 1600 x 2300 1800



Einlegehilfe
insertion device



Mit der Software Picture Programming können NC-Programme einfach und unkompliziert angelegt und geändert werden.
Using the Picture Programming software, NC programmes can easily be created and modified.

